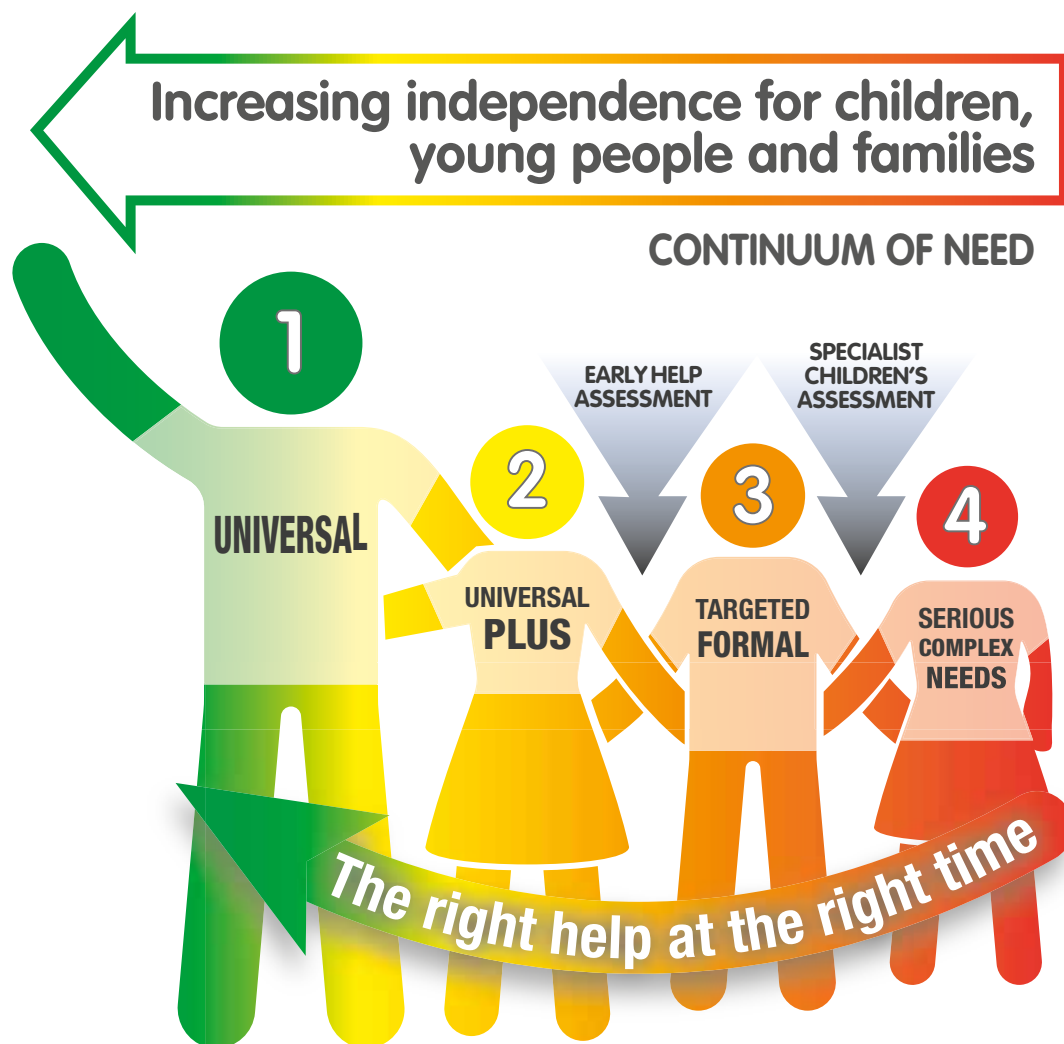


# Levels of Support

The provision of early help services forms part of a continuum of help and support to respond to the different levels of need of individual children and families.



Children and family needs are constantly changing and at different times in their lives they will have differing levels of involvement from a range of services, from universal, targeted and specialist support services.

To target our resources appropriately for children and their families, the early help offer aligns with the 'Continuum of Need'.

## UNIVERSAL (Level 1)

Children making good overall progress in all areas of their development, receiving appropriate universal services such as health and education.

## UNIVERSAL PLUS (Level 2)

Children, young people and families are experiencing emerging problems, whose needs require some targeted support. They are likely to require early help / intervention for a time limited period, to help them move back to Universal (Level 1) and reduce the likelihood of being stepped up to Targeted Formal (level 3) and Serious Complex Needs (level 4).

## TARGETED FORMAL (Level 3)

Children, young people and families with identified vulnerabilities who are experiencing significant additional complex needs and are likely to require a more targeted, multi-agency co-ordinated approach. They are likely to require longer term intervention to help them move to Universal Plus (level 2) or Universal (level 1) services.

## SERIOUS COMPLEX NEEDS (Level 4)

Children, young people and families who are experiencing very serious or complex needs that are having a major impact on their expected outcomes or there is serious concern for their safety. These acute needs may require statutory intensive support for children and young people to be protected. Children, young people and families receiving intervention for level 4 need are helped, where possible, in reducing the seriousness and complexity of need and are stepped down.